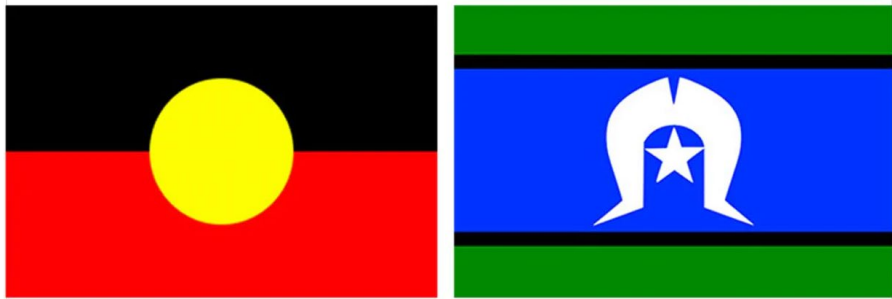


**SECONDARY SCHOOL NURSING
PROGRAM -
A CONDUIT BETWEEN SCHOOLS AND
COMMUNITY SERVICES
for all things health and wellbeing**



Acknowledgement of Country



SECONDARY SCHOOL NURSING PROGRAM

- The SSNP aims to improve the health and wellbeing of young people and reduce negative health outcomes and risk-taking behaviours.
- The SSNP supports the school community in addressing contemporary health and social issues facing young people and their families through health promotion, education, consultation and referral.
- Two yearly Health Promotion Plan devised with school based on need.
- Common Goals - Mental health, Safe Environments Sexual Health, D&A, Healthy Eating.
- School Nurses are the drivers for many health promotion initiatives.

WHO Health Promoting Schools Framework (previous version)

School organisation, ethos & environment

Policies, physical environment, social environment.

Curriculum, teaching & learning

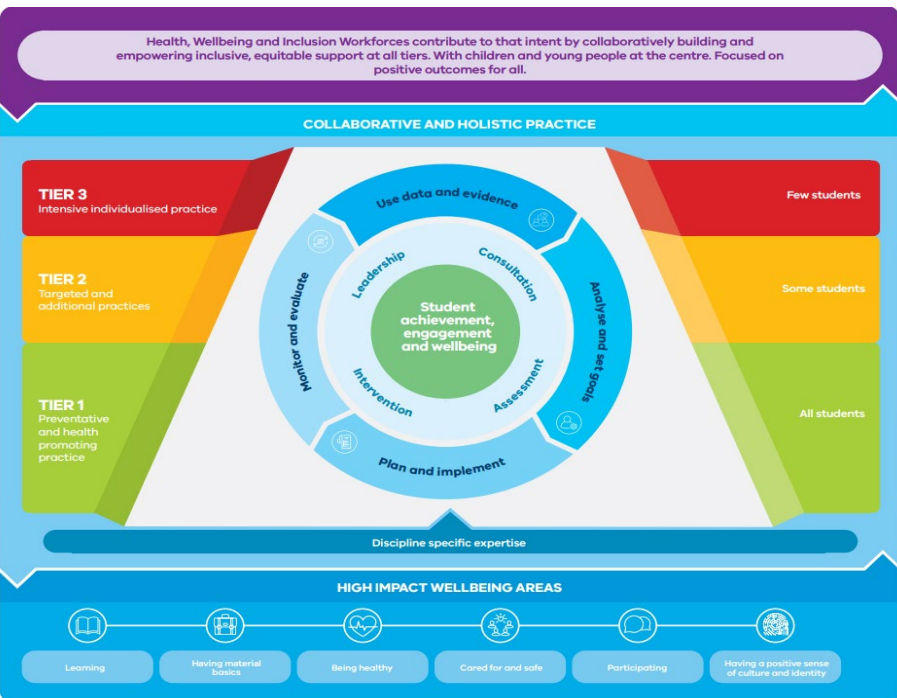
Formal and informal curriculum and skills, Group programs, Parent nights.

Professional Leadership

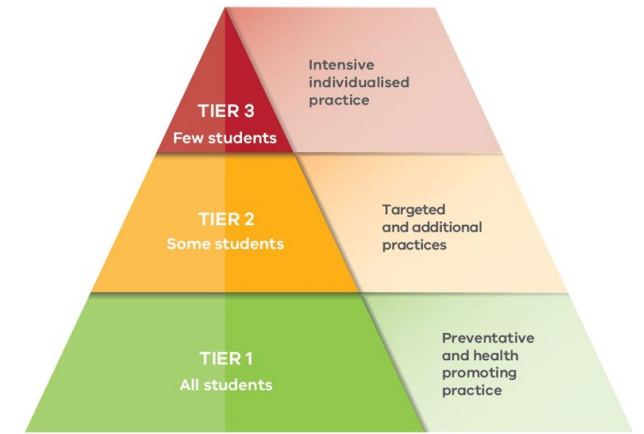
Staff PD, capacity building, Community Practise groups

Partnerships & services

Community links, school health and wellbeing services



What school nurses do...



Advocate / Embed / Connect

Health awareness days and campaigns
Respectful Relationships
Safe Schools
Mental Health Reform
DiSS (Doctors in schools)
Dental hygiene services
Breakfast Club
And more ...

Community connections –
LGA community network groups
Councils
IPC
Youth Services / Headspace
McKillop Family Services
Western Health
Foundation House
Foodbank
and more



Avenues into schools –

- Principal - Generic school email – may get lost in system
- Phone call – Ask to speak to Secondary School Nurse or Wellbeing Team Leader.
- School Website – See what school is focusing on / Wellbeing strategies
- Email Department of Education School Nurse Manager Brimbank Melton Area – for list of nurses in schools / discuss potential connections / joint projects, etc.

Questions?

How can we connect in future?

Thank you

Contact -

Sheryn Stafford

School Nurse Manager – Brimbank Melton Area

sheryn.stafford@education.vic.gov.au

0428 253 624

